

AUTOMATION SYSTEMS

Industrial Controls and Automation are an established engineering company operating in the manufacturing, food and beverage sectors. Our directors are highly qualified engineers having accrued some 20 years' experience in many industry sectors, with proven track records.

Our core business is the engineering and commissioning of industrial software (Automation) systems for OEM's based both in the UK and in Europe.

The company currently has one office located in Swadlincote, South Derbyshire which is base to our engineers who cover customer's sites in the UK, Europe and North America when required. Our workshop is also based in Swadlincote, manufacturing all of our electrical control panels.

Industrial Controls and Automation has increased its portfolio of services to provide complete turn-key solutions for OEM's and end users, meeting their ever increasing automation needs. Software engineering is, and will continue to be our core business, the addition of our manufacturing workshop facility has enabled us to sell our product with more confidence and completeness, making the ICA solution more attractive to our potential and existing customers.

We provide control system consultancy services to many OEM, Tier 1 and Tier 2 customers across all main industrial sectors. This can and does involve such disciplines as functional design specifications (FDS), site acceptance test documents (SAT), control system design and electrical panel design. This can be particularly useful for companies who have little experience or support in these areas.

With many years of experience in the design and configuration of a wide range of process control and automation systems, Industrial Controls and Automation can provide cost effective and streamlined solutions for your control system implementation.

All software systems leave our premises fully simulated using the latest simulation methods. Testing of the installed software is a key part of the engineering process to ensure that downtime for clients is kept to the absolute minimum.

ICA specialise in Siemens products (Step 5, Step 7, WinCC Flexible and WinCC, Portal) and Rockwell but also have many years' experience with other manufactures such as the examples listed below:-.



CONTROL PANEL MANUFACTURE

Industrial Controls and Automation provide full turnkey solutions to panel design from initial design conception drawings to the completed and installed panel.



Panels are designed to the latest European standards and we always use the BATNEEC (Best available techniques not entailing excessive costs) principle.

The design process involves the issue, from the customer, of the safety category of the machine. ICA uses this category to select the appropriate LV control components to achieve the safety rating.

Full documentation supports each panel, including a certificate of conformity/letter of incorporation which can later be used, along with the manufacturer's documentation, to enable the issue of the full CE marking certificate for the machine.

During each stage of the design process the customer's approval is obtained prior to continuing to the next step.



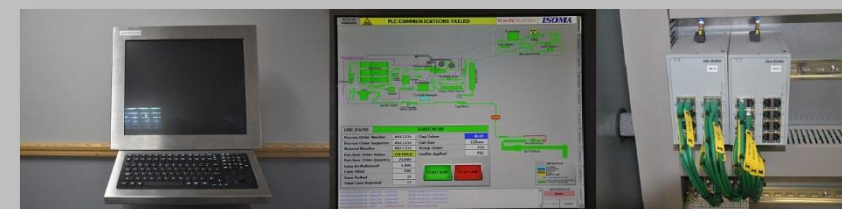
ELECTRICAL INSTALLATION SERVICES

We have built a team of experienced electricians to support our manufacturing facilities and provide clients with all services necessary to complete any size of project in house.

Our electricians all carry the IOSH safety passport and have all the necessary health and safety and equipment training required to meet current regulations.

Typically our installation work is part of a larger project and involves installing our own electrical panels but our team is also available for installation only works. Our team also supports the commissioning team and has a wealth of experience in drive setup, network setup, etc.

All works are completed to the current regulations and standards, full certification will be issued at the end of each project using the Amtech design software.



SIEMENS

- Siemens S5
- Siemens S5 to S7 conversions
- Siemens S7 (200, 300, 400 & 400S)
- Siemens TIA Portal
- Siemens HMI
- Siemens Drives
- Siemens Vision Systems
- Profibus and Ethernet networks

- WinCC SCADA
- WinCC Central Archive Server

Rockwell Automation

- PLC 5
- SLC 500
- ControlLogix
- GuardLogix
- CompactLogix
- MicroLogix
- Panelview

Allen Bradley Drives

- RS View 32
- Factory Talk



A division of solutions^{PT}

